

# Recycling

Recycling benefits us all. Many materials that we dispose of fill our landfills and degrade our landscape. Our objective is to divert construction demolition materials from waste and process them into useful product that can be put back into our local economy in a cost effective manner.



Our location allows materials to be delivered to our site from anywhere in the State College area with a minimum amount of transportation saving time and fuel.

Please join us in building a better tomorrow for our community.



### Hours of Operation

Monday—Friday: 8:00 AM—4:00 PM

Saturday & Sunday: Closed



**Glenn O. Hawbaker, Inc.**

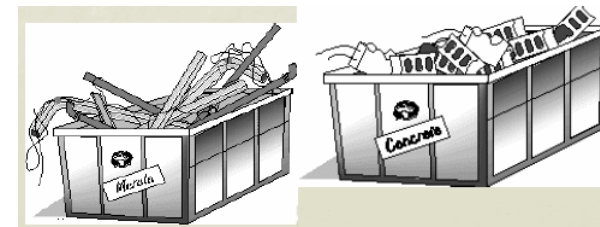
110 Hawbaker Industrial Drive  
State College, PA 16803

Phone: 814-272-0008  
Fax: 814-272-2459  
E-mail: [recycle@goh-inc.com](mailto:recycle@goh-inc.com)



**Recycle Center**

YOUR LOCAL SOURCE FOR  
**CONSTRUCTION  
MATERIALS &  
DEMOLITION  
WASTE DISPOSAL**



**110 Hawbaker Industrial Drive, State College**

**Tel: 814-272-0008**

## About the Center

The recycling center will both accept materials and redistribute materials into the local economy.

The prices shown opposite are the costs for both types of materials.

It is our intention to expand our capability and products offered at our facility. If you do not see something that you feel could benefit our community please let us know so that we can investigate what may be required to make that material or service available to State College. Our overall objective is to prevent as many materials as possible from going to land fills and return them to our local economy in a useful and cost effective manner.

We are available to survey the site of a demolition project to assist with determining what materials can be recycled and what sorting may be necessary to provide you with the most economical disposal solution.

## Price List

### Tipping Fee — Brush & Clean Lumber

Tri-axle load	.....\$53.00
Tandem axle	.....\$53.00
Single axle	.....\$42.00
T-Tag	.....\$42.00
Pick up truck	.....\$27.00

### Tipping Fee — Clean Fill, Block, Brick, Earthen Material

#### Concrete & Trees

Tri-axle load	.....\$57.00
Tandem axle	.....\$52.00
Single axle	.....\$47.00
T-Tag	.....\$32.00
Pick up truck	.....\$27.00
Asphalt	Free

#### Small Quantity Sales

	per ton	35 lb. bag OR 5 gal. bucket
Crushed concrete	.....\$9.50	.....\$6.00
1-B Limestone	.....\$20.00	.....\$6.00
2-B Limestone	.....\$19.00	.....\$6.00
2-A Limestone	.....\$16.50	.....\$6.00
#3 Limestone	.....\$18.50	.....\$6.00
Limestone sand	.....\$17.00	.....\$6.00
Unscreened Topsoil	45.00/cy	.....\$6.00

#### Unscreened Topsoil-FOB Recycle Center

T-Tag Load	.....\$75.00
Single axle Load	....\$160.00
Tandem Load	....\$320.00
Tri-axle Load	....\$400.00

**\*Call for large quantity orders greater than 10 loads**

Decorative Stone	per ton	5 gal. bucket
1-B River Gravel	.....\$35.00	.....\$12.00
2-B River Gravel	.....\$34.00	.....\$12.00
#3 River Gravel	.....\$44.00	.....\$12.00

Mulch & Compost	/cu. yd.	35 lb. bag
Compost	.....\$20.00	.....\$6.00
Mulch	.....\$18.00	

#### Pickup or Delivery Charge as Available

T-Tag or Pick up	.....\$108.00/hr
Tri-axle Truck	.....\$118.00/hr

## Additional Information

- Clean fill testing to accompany all incoming materials
- Prices as stated are exclusive of sales tax where applicable